

# HAMGEEK T95 Dual-mode POC Radio

## 1.RADIO OVERVIEW



## **2.OPERATION**

### **1.Turning on Your Radio /To Adjust Volume**

Turn Power On/Off/Volume Knob clockwise to turn the radio on, counterclockwise to turn the radio off.

To Adjust Volume

1. Rotate Power On/Off/Volume Knob clockwise to increase the volume.
2. Rotate Power On/Off/Volume Knob counterclockwise to decrease the volume. Do not hold the radio close to your ear. If the volume is set to an uncomfortable level, it can hurt your ear.

### **2.PoC PTT Button**

Push this button to transmit on Poc communicate, release it to receive.

### **3.Analog PTT Button**

Push this button to transmit on Analog channel, release it to receive

### **4.SK1**

Default settings are:

Press Key: An arrow pointed, switch between on PoC and analog mode on display,  
Press & Hold Key: Enter system settings

### **5.SK2**

Default settings are:

Press Key: Turn off screen, turn on screen

Press & Hold Key: Activate Emergency Alert (SOS)

### **6.Menu/Confirm key**

Default settings are:

Press Key: in standby enter menu page,on Menu page mean confirm

Press & Hold Key: Enter settings

### 7.Up/Down key:

Menu Page: scroll up and down

Home Page arrow point to analog mode: add and subtract frequency or Channel switch

### 8.Back button

Return to the previous page or exit

### 9.Numeric Keypad

According to the arrow pointing:

Pointing to PoC Mode: input number,enter dialer interface

Pointing to analog Mode: on frequency mode input number,pop up the interface for inputting frequency

\*key: Press & Hold keypad locked

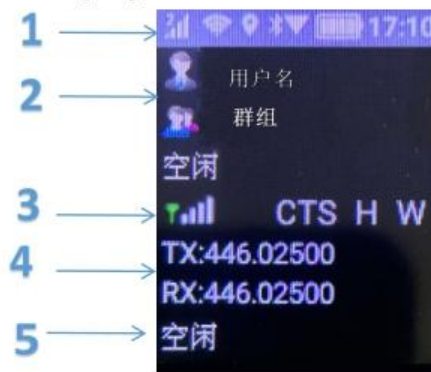
#key: Press & Hold Switch to analog mode

On frequency mode:adjust the frequency or input the frequency

On Channel &frequency Mode:Display Imported or channel list Newly added channels

On Channel Mode:Display Channel name

### 3.LCD display



① (PoC information/ (SIM1, SIM2) 、WIFI,GPS, Bluetooth, arrow, battery level, time)

② PoC display Zone/(Group/Member/Call Status)

③ Display analog signal, sub tone, power, bandwidth

④ Analog frequency display zone

On frequency mode/Channel frequency mode: Display TX/RX frequency

On Channel Mode:Display Channel name

⑤On home page display the status of analog transmit

## Menu ▼

On home page, Press **【menu】**, enter menu settings, scroll up and down button, Select related menu, Press **【Back Button】** exit and back to home page.

main menu	second menu	third menu	fourth menu
PoC	Poc home page		--
Channel settings	channel setting related value		--
Channel List	Add/Delete/adjust channel		--
Function	Analog Scanning	Enable scanning to identify the frequency and sub tone of the other party	--
	Public Network Switch	OFF/ON	--
	Analog Switch	ON/OFF	--
	Power saving	OFF/ON	--
	Receive priority	PoC priority/analog priority	--
	Mode	Frequency mode/Channel model/channel/frequency mode	--
	Restore Default	Confirm/Cancel	--

## Settings

Press & Hold SK1 : Enter system settings

main menu	second menu	third menu	fourth menu
Network	SIM setting	SIM1/SIM2	--
	Data Roaming	ON/OFF	--
	Preferred Network Mode	GlobalGSM/WCDMALTECDMA+LTE/EVDO	--
	APN	Add/Delete/Select	--

Radio Setting	using bluetooth headset PTT	ON/OFF	--	
	system Bluetooth SCO controll	ON/OFF	--	
	clean memory	--	--	
	saving flow mode	ON/OFF	--	
	Power saving mode	power saving/automation/high performance	--	
WLAN	ON/OFF	select wifi	--	
Bluetooth	ON/OFF	select Bluetooth	--	
Display	Brightness level	1-6level	--	
	sleep	30seconds/1minute/2minutes/5minutes/10minutes/30minutes/Never	--	
	Font Size	Small/Normal/Large/Huge	--	
	System Font	Font reset		--
		System Font	Werdana	
			monospace	
			goudy	
Sans-zawgyi				
Sans-serif-black				
APPS	APK	--	--	
Location	ON/OFF	--	--	
	Mode	High accuracy/Battery saving/Device only	--	
Language	Language	中文/English	--	
	Keyboard/input methods	Youdoinputmethod	--	
Date&time	Automatic date&time	ON/OFF	--	
	Automatic time zone	ON/OFF	--	
	Set date	Modify please turn off Automatic date&time at first	--	
	Set time	Modify please turn off Automatic date&time at first	--	
	Select time zone	Modify please turn off Automatic time zone	--	
	use 24-hour format	ON/OFF	--	
	Battery status	Battery status	--	
		Battery level	--	
		network		
		signal strength		

About radio	Status	SIM status	cellular network type
			service state
			Roaming
			cellular network state
			My phone number
			IMEI
			IMEISV
		IMEI information	MIN
			PRLversion
			MEID
			IMEI
			ICCID
		IP address	--
		WLANMAC address	--
	Bluetooth address	--	
	Serial number	-	
	up time	--	
	Processor info	--	--
	Android version	--	--
	Baseband version	--	--
	Kemel Version	--	-
	Legal information	open source licenses	--
		wallpapers	--
Build number	--	--	